

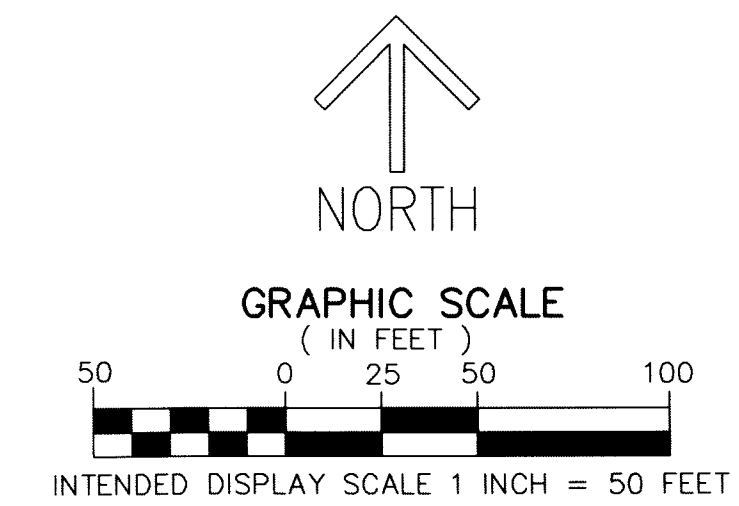
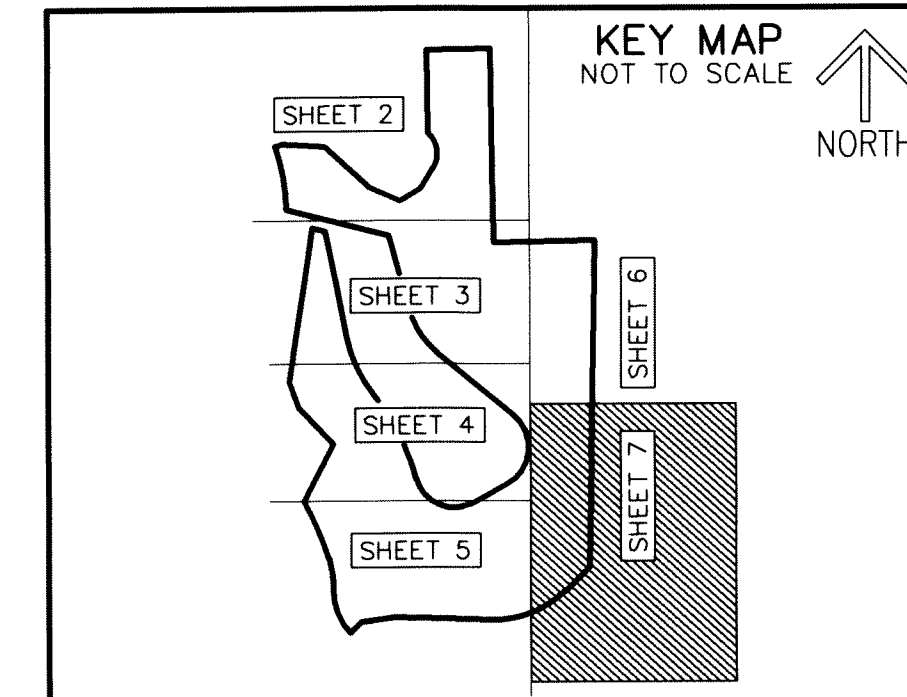
# ALTIS LAKE PUD

BEING A REPLAT OF PORTIONS OF BLOCK 30, PALM BEACH FARMS CO. PLAT NO. 3, ACCORDING TO THE PLAT THEREOF, AS RECORDED IN PLAT BOOK 2, PAGES 45 THROUGH 54 AND THE GOLF COURSE TRACT, PLAT NO. 3 PALM BEACH GOLF CLUB ESTATES, ACCORDING TO THE PLAT THEREOF, AS RECORDED IN PLAT BOOK 29 PAGE 107 AND ALL OF THE GOLF COURSE TRACT, PLAT NO. 4 PALM BEACH GOLF CLUB ESTATES, AS RECORDED IN PLAT BOOK 29, PAGE 204, ALL OF THE PUBLIC RECORDS OF PALM BEACH COUNTY, FLORIDA, LYING IN SECTION 27, TOWNSHIP 44 SOUTH, RANGE 42 EAST, PALM BEACH COUNTY, FLORIDA

203

SHEET 7 OF 7

THIS INSTRUMENT PREPARED BY  
DAVID P. LINDLEY  
OF  
**CAULFIELD & WHEELER, INC.**  
SURVEYORS - ENGINEERS - PLANNERS  
7900 GLADES ROAD, SUITE 100  
BOCA RATON, FLORIDA 33434 - (561)392-1991  
CERTIFICATE OF AUTHORIZATION NO. LB3591



**NOTES**  
**COORDINATES, BEARINGS AND DISTANCES**  
COORDINATES SHOWN ARE GRID  
DATUM = NAD 83 (90 ADJUSTMENT)  
ZONE = FLORIDA EAST  
LINEAR UNIT = US SURVEY FEET  
COORDINATE SYSTEM 1983 STATE PLANE  
TRANSVERSE MERCATOR PROJECTION  
ALL DISTANCES ARE GROUND, UNLESS OTHERWISE NOTED  
SCALE FACTOR = 1.0000295  
GROUND DISTANCE X SCALE FACTOR = GRID DISTANCE  
BEARINGS AS SHOWN HEREON ARE GRID DATUM,  
NAD 83 (1990 ADJUSTMENT), FLORIDA EAST ZONE.

**LEGEND/ABBREVIATIONS**

- C - CENTERLINE
- Δ - DELTA (CENTRAL ANGLE)
- CB - CHORD BEARING
- CD - CHORD DISTANCE
- D.B. - DEED BOOK
- E - EASTING (WHEN USED WITH COORDINATES)
- L - ARC LENGTH
- LME - LAKE MAINTENANCE EASEMENT
- LB - LICENSED BUSINESS
- N - NORTHING (WHEN USED WITH COORDINATES)
- O.R.B. - OFFICIAL RECORD BOOK
- PBCUE - PALM BEACH COUNTY UTILITY EASEMENT
- PC - POINT OF CURVATURE
- PCC - POINT OF COMPOUND CURVATURE
- PRC - POINT OF REVERSE CURVATURE
- PDE - PUBLIC DRAINAGE EASEMENT
- PT - POINT OF TANGENCY
- PNT - POINT OF NON-TANGENCY
- PUD - PLANNED UNIT DEVELOPMENT
- R - RADIUS
- (R) - RADIAL LINE
- PRM - DENOTES SET PERMANENT REFERENCE MONUMENT  
SET 4"x 4"x 24" CONCRETE MONUMENT WITH  
ALUMINUM DISK STAMPED "C&W PRM LB3591"
- UE OR U.E. - DENOTES UTILITY EASEMENT

